

THE CHURCH OF ENGLAND  
**DIOCESE OF  
ST ALBANS**

**NOTES TO THE DRAFT BUDGET FOR 2012**

**BUDGET SUMMARY:**

	2011	2012
	£K	£K
Parochial Ministry and Mission	8,272	8,405
Housing	1,699	1,725
Other Ministry costs	863	968
Council for Discipleship and Ministry	746	821
Board for Church and Society	255	301
Administration and Legal	811	824
National Church	495	488
Communications and IT	115	136
Resources Centre	47	57
	<u>13,303</u>	<u>13,725</u>
Sums Available	<u>2,108</u>	<u>2,086</u>
Parish Share Request	<u>11,195</u>	<u>11,639</u>

The draft budget has been prepared in consultation with diocesan boards and committees, the Bishop's Council and the General Committee of the Board of Finance. It has been subject to detailed review by a budget scrutiny group which has sought to keep increases in parish share to the minimum consistent with maintaining the mission and ministry of the parishes and meeting the Diocese's statutory obligations.

It continues to be assumed that total stipendiary parochial clergy numbers will be held at their current level, even if deployment continues to change through pastoral reorganisation.

Total expenditure is forecast to increase by 3.17%. After allowing for total income available, the increase in Common Fund expenditure is 3.97%. Increases in individual parish shares will vary according to the proportions attributable to stipend costs and the Ministry Support contribution.

Numbers and letters on the following pages correspond to those on the left hand side of the budget headings.

## **(1) Parochial Ministry and Mission**

*This item includes the stipends, national insurance and pension costs of all parochial clergy in the diocese, as well as removal and resettlement grants and retired clergy housing costs.*

### **a. Clergy stipends**

This budget provides for an increase of 2.3% in incumbents' stipends in accordance with the latest recommendations from the National Church on the Regional Stipend Benchmark, plus compensation for the additional National Insurance contribution which became due from 2011 when the Pension Scheme contracted back into the State Scheme.

The basic cost of a stipendiary post is:-

Stipend, NIC and Pension	34,792
Parsonage maintenance, running costs and council tax	7,393
Share of training costs	7,283
	<u>£49,468</u>

### **d. Housing Assistance for Retired Clergy**

This item represents costs associated with Church Housing Assistance for Retired Ministry (CHARM) and relates to a subsidy to cover part of the funding and maintenance of property, and some of the Pension Board's costs. (This is part of the payment made to the National Church referred to as "Vote 5".)

### **h. Other Clergy costs**

This includes provision for dealing with exceptional pastoral needs and reflects actual expenditure in earlier years.

## **(2) Housing**

*This item covers the housing costs of parochial clergy throughout the diocese.*

### **c. Water rates**

The budget reflects actual expenditure in 2010. The figure varies depending on how many properties are let during vacancies, and how many changes of occupancy take place, when water companies routinely install water meters.

### **e. Repairs / Excess Insurance**

The budget is intended to keep pace with the work necessary on the 238 parsonage houses and Team Vicarages for which the Property Committee is responsible. Expenditure fluctuates according to the number of quinquennial inspections carried out in any year and the consequential need for major repairs.

### **j. Internal Decorations**

The Property Committee has agreed that internal decorations grants for incoming clergy should be increased from £500 to £750 with effect from 1 January 2011 and that policy continues in 2012.

### **l. Land registration of PH properties**

The Property Committee will be aiming to complete its programme of registering its land voluntarily in anticipation of possible compulsory registration as a result of the Land Registration Act 2002.

*continued*

## **(2) Housing (continued)**

### **m. Parsonage Property Enhancements**

The cost of improvements, such as new kitchens and bathrooms, is met in part from this budget with the remainder being met from the proceeds from sales of parsonage houses.

### **n. Property Ring-fenced Fund income**

The amount charged to the Common Fund will be offset in part by income on the ring-fenced fund, which comprises sales proceeds from former parsonage houses.

### **p. Council Tax**

This figure is based on the average increase considered likely across the fifteen district and borough councils in the diocese.

## **(3) Other Ministry Costs**

*The largest item under this head is the support of ordinands in training. Other items include the cost of Rural Deans, Archdeacons and the Safeguarding Officer.*

### **c. & d. Safeguarding Officer**

The budget covers the cost of a part-time officer and includes the costs of CRB checks for clergy and a contribution towards the costs of CRB checks for parish volunteers and employees. The hours of the Safeguarding Officer have been increased to provide support for work relating to Vulnerable Adults.

### **f. Ordinands' Training**

The budget covers the diocese's share of national training cost ("Vote 1"). These have increased as a result of increases in Higher Education fees.

## **(4) Council for Discipleship and Ministry**

*The Council is responsible for proposing and steering policy in development and learning for the Diocese. In particular, the Council is concerned with adult learning, recruitment to ministry, ministerial training and appraisal, work with children and young people, and stewardship.*

### **c. Candidates in Training Support**

It is expected that there will be an increase in the number of candidates in training and the budget provides for maintenance grants.

### **f. Ministry Development Team – Operating costs**

The impact of Common Tenure and the fact that grants and bursary awards have not been increased for more than ten years have given rise to an upward review in the amount available, with the intent of encouraging the continual professional development of our clergy and lay readers.

### **g. Clergy Study Days**

Provision has been made for residential conferences for Clergy and Readers.

## **(5) Board for Church and Society**

*The Board is responsible for promoting the whole mission of the Church in wider society throughout the Diocese. In particular, the Board has special regard for social responsibility, evangelism, ecumenism, interfaith relations, workplace ministry and international links.*

### **e. Workplace Ministry/k. Grant to Ecumenical Partnership**

Support costs for workplace ministry will be met by way of a grant rather than being paid directly by the DBF.

### **l. Environment Grants**

The budget is in response to a request by Synod in October 2010 to establish a matched funding scheme to encourage parishes to make environmental improvements.

### **m. Flagship projects**

The budget is intended to support three flagship projects in the Diocese, ASCEND, Grassroots Luton, and The Living Room.

### **n. Living God's Love**

The budget is to cover the expenses associated with supporting Mission Action Planning in parishes as part of the Living God's Love initiative.

## **(6) Administration and Legal**

*The Budget covers DBF staff, excluding the Estates Team included under item 2, office and building costs, Committee and Synod expenses, and the costs of the Registrar and Chancellor.*

Total costs are budgeted to increase by 1.58%.

## **(7) National Church Requirement**

The General Synod budget comprises 5 'votes'. Vote 1 is included in (3) Other Ministry Costs, and Vote 5 in (1) Parochial Ministry and Mission. This head covers Votes 2, 3 and 4 which are General Synod budgets for central establishment costs, legal aid for clergy, minor grant schemes and mission agency clergy pensions.

## **(8) Communications and Information Technology**

The Budget covers the cost of the Communications Officer and Assistant, and associated office costs. It includes provision for an IT Officer, the costs of which are off-set in part by a reduction in the budget for outsourced IT support.

### **(9) Resources Centre**

The budget under this head includes a contribution towards the running of the Resources Centre. The cost of work with Church Schools carried out by the Director of Education and his team is mainly funded by grants from the Consolidated Fund for Statutory Education. This year provision is made for a subsidy of £10,000 from the Common Fund towards Schools Work.

### **(11) Sums Available**

*15.4% of the total expenditure is met from historic income, fees and grants.*

#### **a. Guaranteed Annuities, Selective and Transferred Allocation**

This Diocese no longer receives any selective allocation from the Church Commissioners. The majority of income from Guaranteed Annuities was transferred to the Archbishops' Council from 2006 for redistribution among dioceses and the remainder will 'fall in' as vacancies arise.

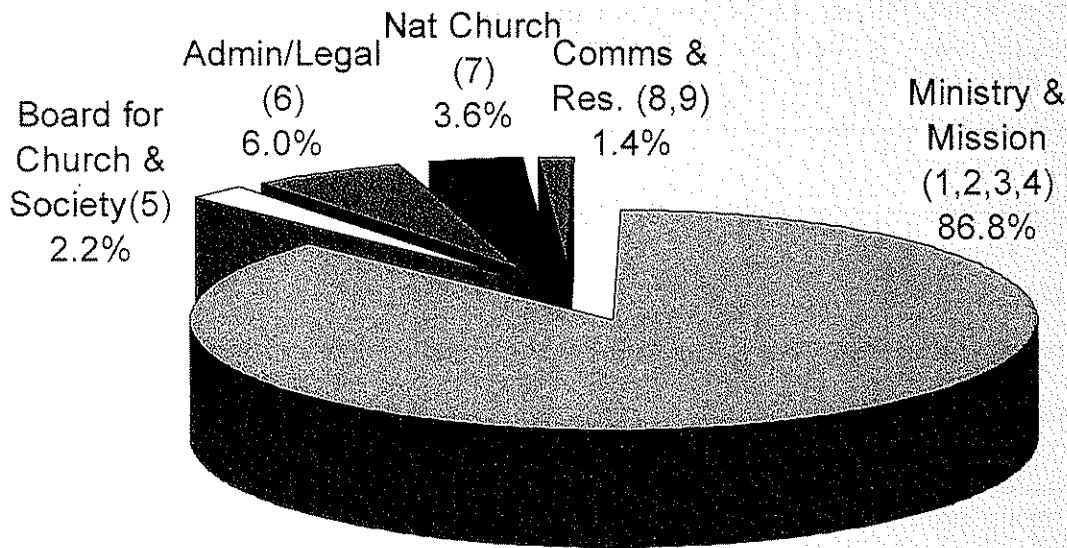
#### **d. Income from Lettings and Rents**

This item represents rental income from vacant corporate and parsonage properties and is included net of any expenditure on improvements to the properties concerned.

#### **l. & m. Mission Support Fund**

£100,000 will continue to be made available out of the grant from the Archbishops' Council.

## 2012 Budgeted Common Fund Expenditure £13.73m 3.17% increase

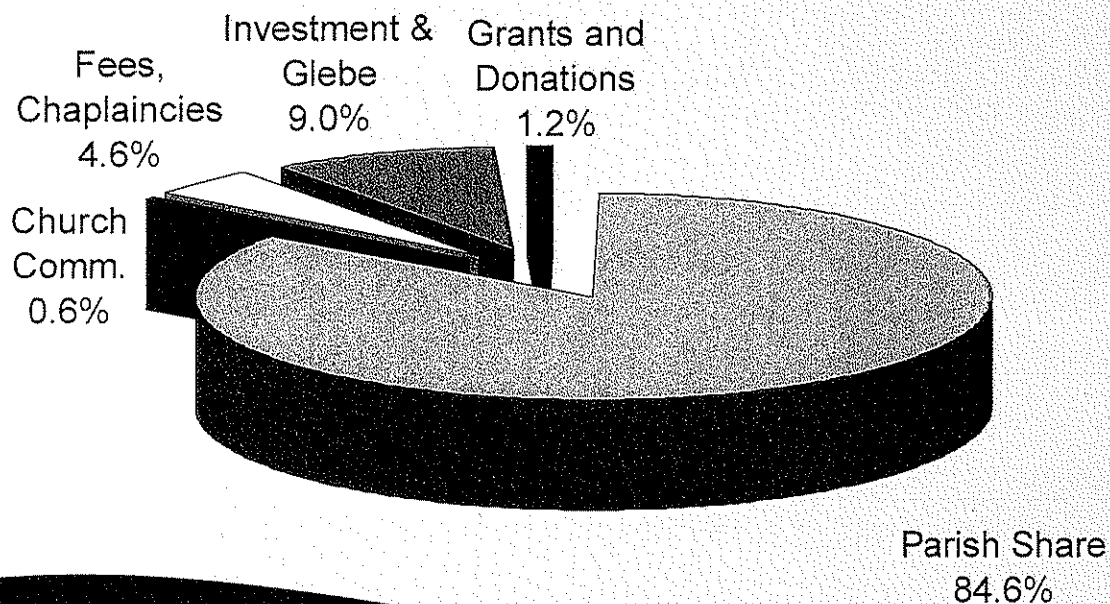


Numbers in brackets refer to sections in the budget summary

*Living God's Love*  
The Diocese of St Albans

[www.livinggodslove.org](http://www.livinggodslove.org)

## 2012 Budgeted Common Fund Income £13.73m



*Living God's Love*  
The Diocese of St Albans

[www.livinggodslove.org](http://www.livinggodslove.org)